

Features

- 2-way normally open operation
- Unique double disc design with overtravel provides redundant sealing for leak tight shutoff in the closed (energized) position
- Visual indication of open & shut position
- Proof of Closure Switch 1 amp
- Die-cast aluminum bodies
- Zero differential piloted diaphragm
- Valves provided with 1/8" NPT downstream pipe tap with plug for routine testing

Construction

Valve Parts in Contact with Fluids	
Body	Aluminum
Seals and Disc	NBR
Core Tube	305 Stainless Steel
Core Guide	Acetal
Rider Ring	PTFE
Core and Plugnut	430F Stainless Steel
Springs	302 Stainless Steel
Shading Coil	Copper
Pipe Plug	Zinc-Plated Steel

Electrical

Standard Coil Class of Insulation	Watt Rating and Power Consumption			Ambient Temp. °F	Spare Coil Family	
	Watts	VA Holding	VA Inrush		General Purpose	Explosionproof
					AC	AC
F	20.1	43	240	-40 to 125	272610	-

Standard Voltages: 120, 240 volts AC, 60 Hz

Proof of Closure Switch

Switch is factory set and not to be field adjusted.

Reed Switch: SPST (closed when valve is in closed position.)

Max. Electricity: 1 amp, 120 volts

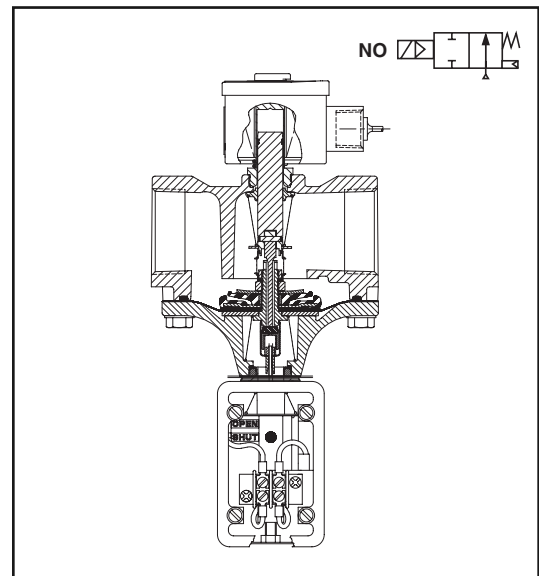
Load: 60 Hz, 15 watt (resistive)

Leads: 18" long

Enclosure: Type 4 Watertight

Solenoid Enclosures

RedHat II molded epoxy Type 1, 2, 3, 3S, 4 and 4X combination. General Purpose and Watertight solenoid enclosures with 1/2" conduit hub as standard.



Valve Response Time

Opening Time: Less than 1 second

Closing Time: Less than 1 second

Approvals

UL listed to standard 429 "Electrically Operated Valves," Guide Y10Z, File MP618 General Purpose Valves.

CSA Certified to:

1) Standard C22.2 No. 139 "Electrically Operated Valves," File 010381.

2) Automatic Gas Valves Z21.21 (6.5), File 112872.

Specifications (English units)

Pipe Size (ins.)	Orifice Size (ins.)	Cv Flow Factor	Gas Capacity ① Btu/hr.	Operating Pressure Differential (psi)		Max. Fluid Temp. °F	Catalog Number	Const. Ref.	Agency			Wattage	Approx. Shipping Weight (lbs)
				Min.	Max.				UL	FM	CSA		
COMBUSTION (Fuel Gas) - NORMALLY OPEN													
3/4	1 5/8	11	659,000	0	5	125	8214G038C	1	●	-	●	20.1	4.8
1	1 5/8	21	1,179,000	0	5	125	8214G054C	1	●	-	●	20.1	4.8
1 1/4	1 5/8	32	1,538,750	0	5	125	8214G064C	2	●	-	●	20.1	4.8
1 1/2	1 5/8	35	1,615,250	0	5	125	8214G074C	2	●	-	●	20.1	4.8
2	2 3/32	60	2,924,500	0	5	125	8214G084C	3	●	-	●	20.1	6.8

● = General Purpose Valve. ① 1" W.C. Drop @ 2" W.C. Inlet Pressure, 1,000 Btu/cu.ft. or more, 0.64 Specific Gravity Gas.

Specifications (Metric units)

Pipe Size (ins.)	Orifice Size (mm)	Kv Flow (m³/hr)	Gas Capacity ① Btu/hr.	Operating Pressure Differential (bar)		Max. Fluid Temp. °C	Catalog Number	Const. Ref.	Agency			Wattage	Approx. Shipping Weight (kgs)
				Min.	Max.				UL	FM	CSA		
COMBUSTION (Fuel Gas) - NORMALLY OPEN													
3/4	41	9.4	659,000	0	0.3	52	8214G038C	1	●	-	●	20.1	4.8
1	41	17.9	1,179,000	0	0.3	52	8214G054C	1	●	-	●	20.1	4.8
1 1/4	41	27.2	1,538,750	0	0.3	52	8214G064C	2	●	-	●	20.1	4.8
1 1/2	41	29.8	1,615,250	0	0.3	52	8214G074C	2	●	-	●	20.1	4.8
2	53	51.0	2,924,500	0	0.3	52	8214G084C	3	●	-	●	20.1	6.8

● = General Purpose Valve. ① 1" W.C. Drop @ 2" W.C. Inlet Pressure, 1,000 Btu/cu.ft. or more, 0.64 Specific Gravity Gas.

Capabilities Chart

Solenoid Options		Base Catalog Number	Resilient Materials	Standard Rebuild Kit
High Temp.	Junction Box	Aluminum	NBR	AC
HB	JB	8214G038C	●	Not Available
HB	JB	8214G054C	●	Not Available
HB	JB	8214G064C	●	Not Available
HB	JB	8214G074C	●	Not Available
HB	JB	8214G084C	●	Not Available

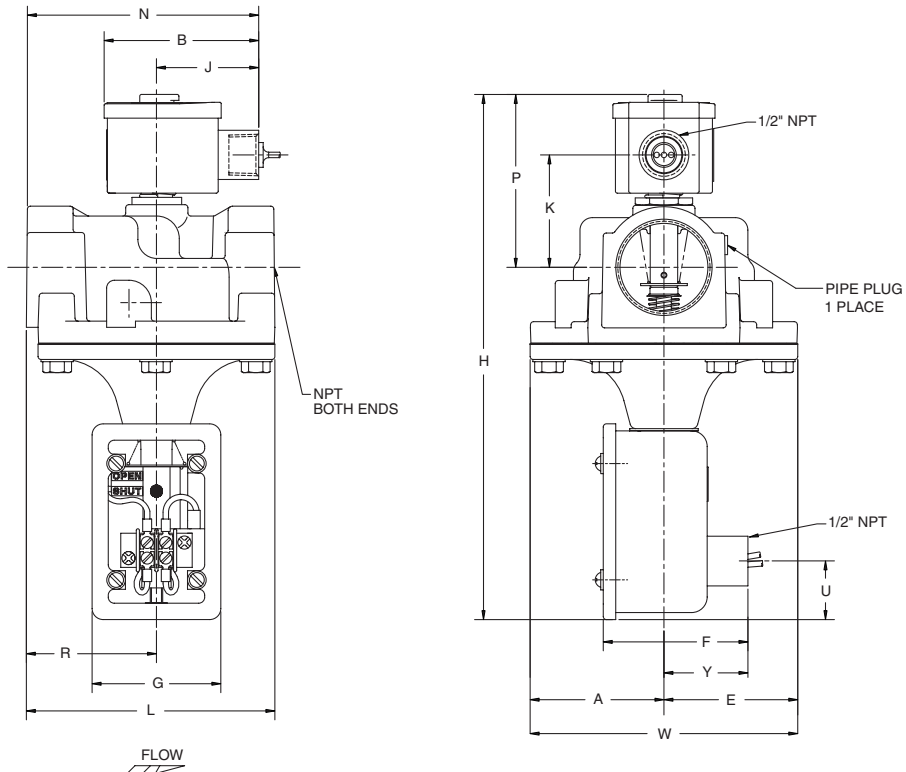
● = Standard. Other options may be available. All option combinations may not be available.

Dimensions inches (mm)

Const. Ref.		A	B	F	G	H	J	K	L	N	P	R	U	W	Y
1	ins.	2.69	3.11	3.07	2.32	10.54	2.05	4.06	5.00	4.67	5.46	2.62	1.18	5.39	1.69
	mm	68	79	78	59	268	52	103	127	119	139	67	30	137	43
2	ins.	2.69	3.11	3.07	2.32	10.54	2.05	4.13	5.00	4.67	5.53	2.62	1.18	5.39	1.69
	mm	68	79	78	59	268	52	105	127	119	140	67	30	137	43
3	ins.	3.16	3.11	3.07	2.32	11.33	2.05	4.62	6.09	5.33	5.84	3.28	1.18	6.32	1.69
	mm	80	79	78	59	288	52	117	155	135	148	83	30	161	43

Vent Valve Requirements	
Manifold Line	Vent Valve
3/8" through 1 1/2"	3/4
2"	1
2 1/2" through 3"	1 1/4
3 1/2"	1 1/2
4" through 5"	2
5 1/2" through 6"	2 1/2
6 1/2" through 7 1/2"	3

Const. Ref. 1, 2, 3



Must be mounted with solenoid vertical and upright.

COMBUSTION

